



Corsican Drive | Hednesford, Cannock | WS12 4SS

Offers Over £350,000





# Summary

\*\* NO CHAIN \*\* VIEWING IS ESSENTIAL \*\* IN NEED OF UPGRADING \*\*

WEBBS ESTATE AGENTS have the pleasure in offering this spacious four-bedroom detached family home located in the sought-after area of Hednesford, Cannock. This substantial property offers excellent potential throughout and presents a fantastic opportunity for buyers looking to create a home tailored to their own taste and specification. Viewing is highly recommended to fully appreciate the space, versatility and secluded location of this property. Situated on the popular Corsican Drive, the home enjoys a convenient location close to local amenities, reputable schools and excellent transport links. The beautiful natural surroundings of Cannock Chase – a designated Area of Outstanding Natural Beauty – are just a short distance away.

# Key Features

- DRIVEWAY
- GARAGE
- FAMILY BATHROOM
- UTILITY ROOM
- KITCHEN
- LOUNGE
- ENSUITE
- FOUR BEDROOMS
- POPULAR RESIDENTIAL LOCATION

# Rooms and Dimensions

## Full Description

### THROUGH HALLWAY

### GUEST WC

### LOUNGE

17'7" x 11'1" (5.37m x 3.40m)

### DINING ROOM / BEDROOM

10'2" x 9'3" (3.11m x 2.82m)

### KITCHEN DINER

10'1" x 11'11" (3.09m x 3.65m)

### UTILITY ROOM

9'4" x 4'9" (2.85m x 1.45m)

### LANDING

### BEDROOM ONE

11'8" x 10'10" (3.56m x 3.31m)

### ENSUITE SHOWER ROOM

### BEDROOM TWO

10'10" x 8'8" (3.31m x 2.65m)

### BEDROOM THREE

10'9" x 7'11" (3.28m x 2.42m)

### BEDROOM FOUR

8'2" x 7'5" (2.51m x 2.28m)

### FAMILY BATHROOM

### GARAGE

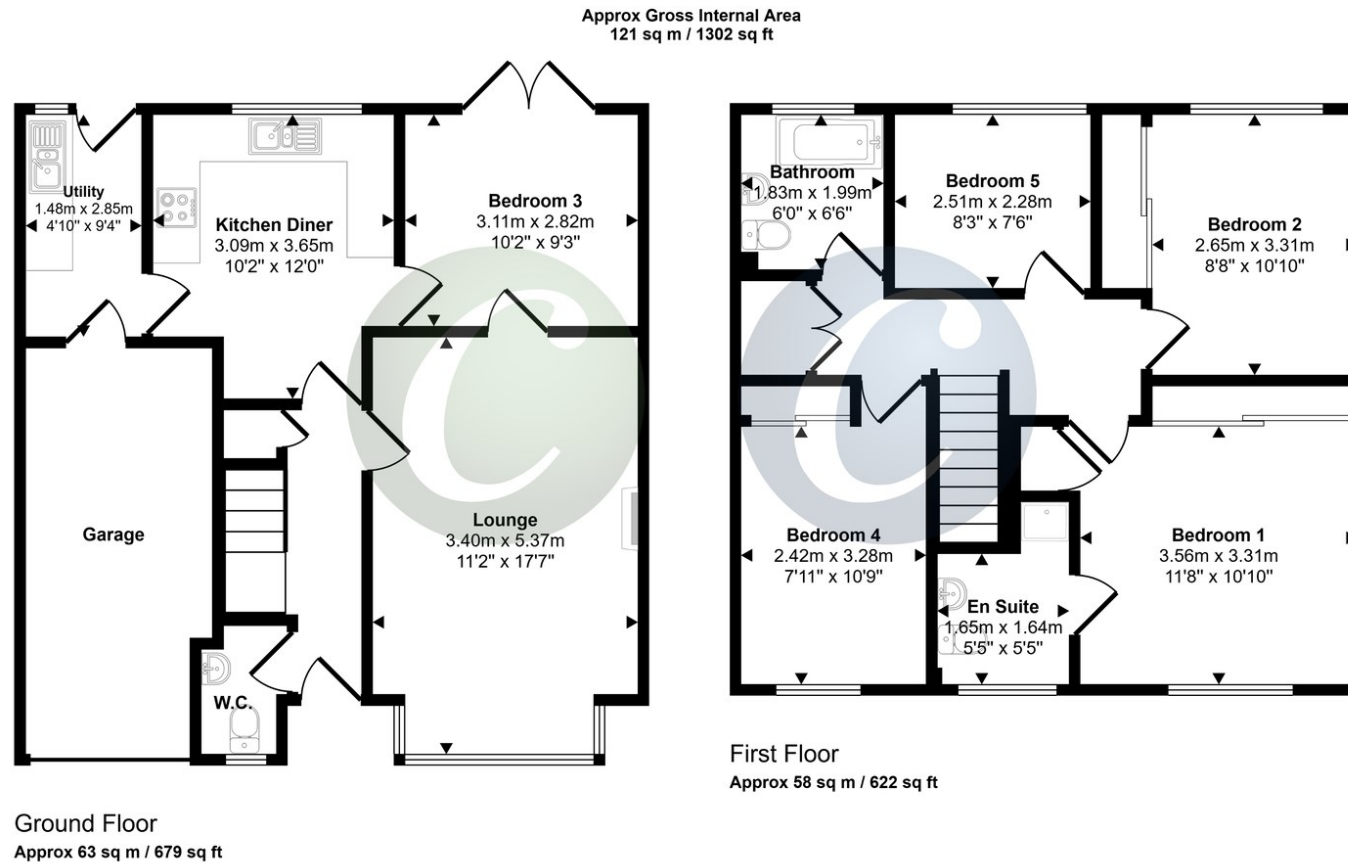
### PRIVATE REAR GARDEN

### DRIVEWAY

### Identification Checks (R)

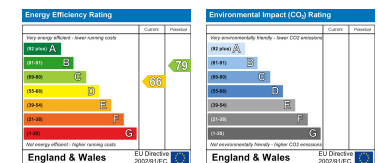






This floorplan is only for illustrative purposes and is not to scale. Measurements of rooms, doors, windows, and any items are approximate and no responsibility is taken for any error, omission or mis-statement. Icons of items such as bathroom suites are representations only and may not look like the real items. Made with Made Snappy 360.

Webbs Estate Agents - endeavour to maintain accurate depictions of properties in Virtual Tours, Floor Plans and descriptions, however, these are intended only as a guide and purchasers must satisfy themselves by personal inspection.



Globe House Upper Brook Street, Rugeley, Staffordshire, WS15 2DN

Tel: 01889 583377 | Email: [rugeley@webbsea.co.uk](mailto:rugeley@webbsea.co.uk) | [www.webbestateagents.co.uk](http://www.webbestateagents.co.uk)

**Webbs**  
estate agents